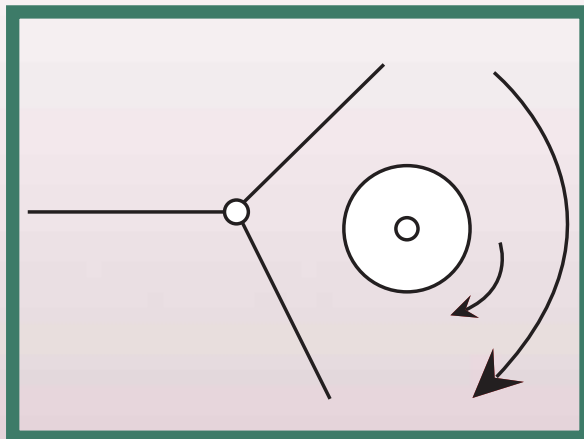




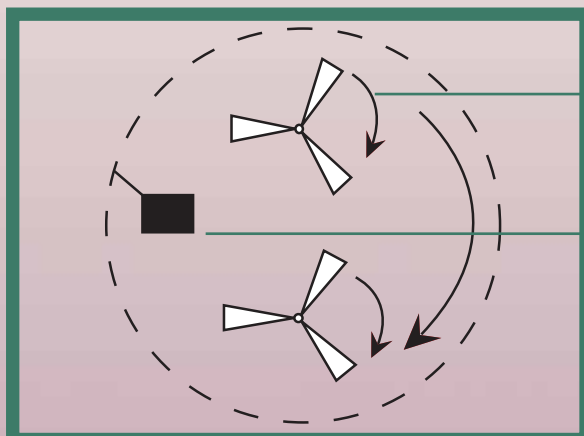
# PLANETARY MIXER

(For High Viscosity No - Flow Thixotropic Products)

IOANNIS NEOKOSMISIS  
FILLING MACHINES  
38 ERMIONIS Str., N. KIFISSIA  
TEL.: +30 210.620.47.80,  
FAX: +30 210.620.47.80

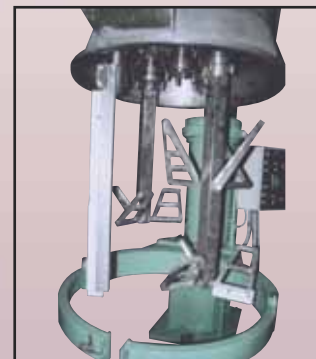


Schematics of the movements of a simple slow-speed mixer.

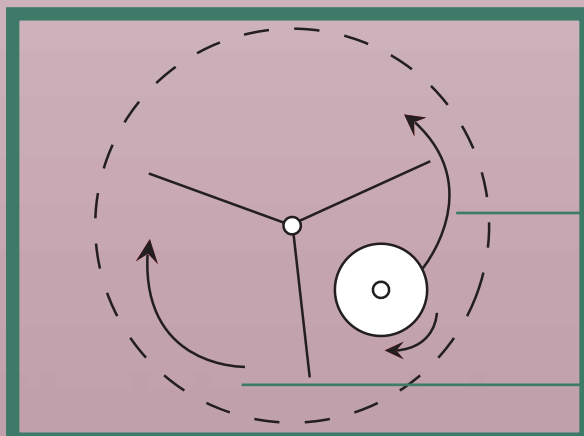


Butterfly shaft

Scraper



Schematics of the movements of a planetary mixer (kneading configuration).



Planetary slow-speed mixer configuration.

All the movements of a simple slow speed mixer with an extra movement: The sawtooth impeller shaft makes a counter rotating motion from the turning direction of the triple impeller shaft.



- This machine has a unique feature. With its removable shafts you can have two different working settings in one machine.
- One as a Mixer for heavy and high viscosity products and two as a kneading machine for light but high viscosity products.
- Hydraulic operation electronically controlled (PLC) noise free.





### Kneading Machine Setting

- Two shafts with butterfly impellers and one scrapper.
- Full coverage of the volumetric capacity of the tank by the butterfly impellers because of the planetary motion (page 2 photo).



### Mixer Setting

- One shaft with dispenser disk slow speed (600rpm maximum)



Hydraulics Power Unit



Planetary mechanism